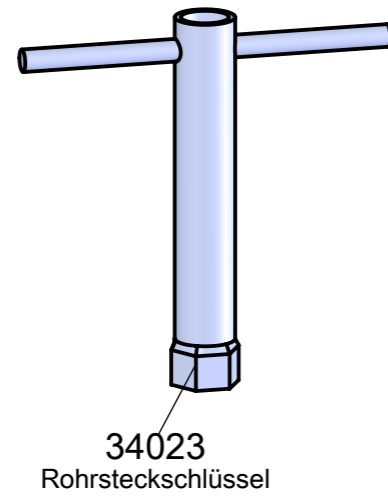
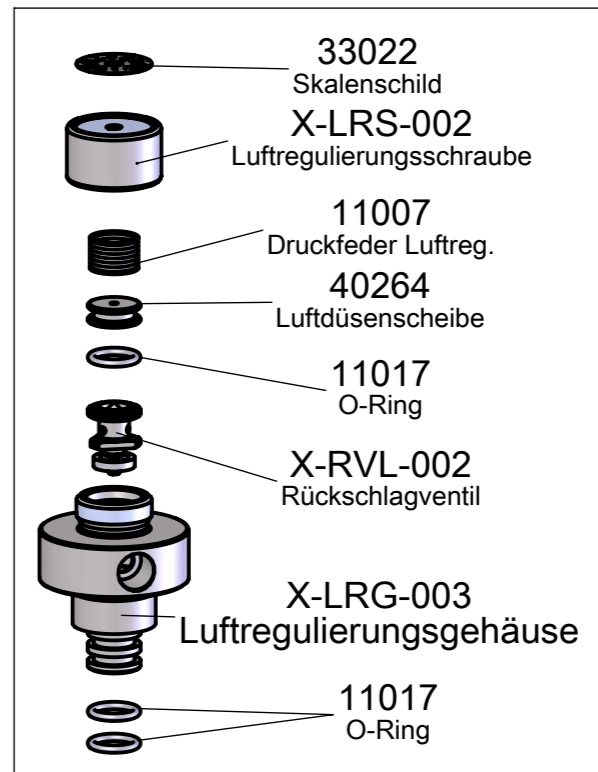
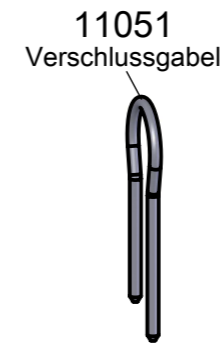
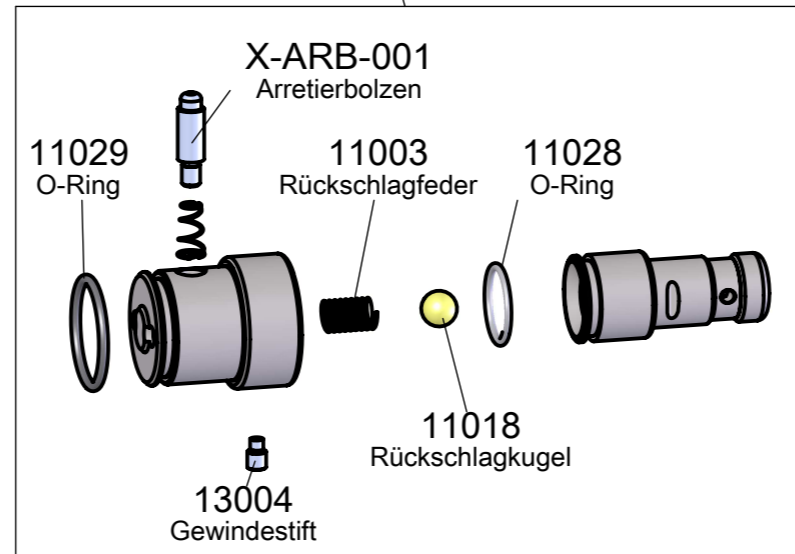


Zubehör:

- 51008 Dichtungssatz komplett
- 50009-1 Reinigungsbürstensatz
- 52018 Werkzeugsatz
- 35004 Stößel für Schlagteller
- 35026 Garniertülle Kunststoff
- 36068 Feingarniertülle

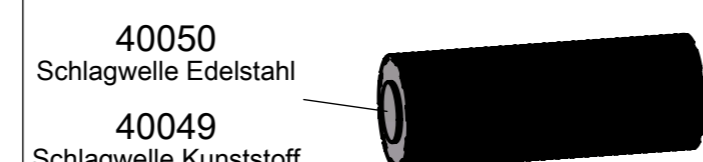
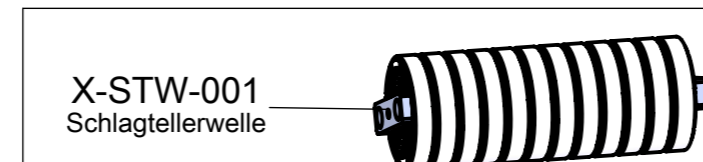
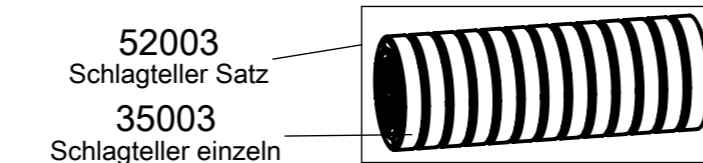
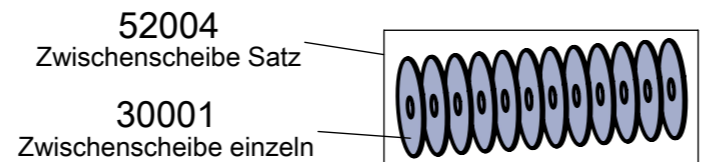
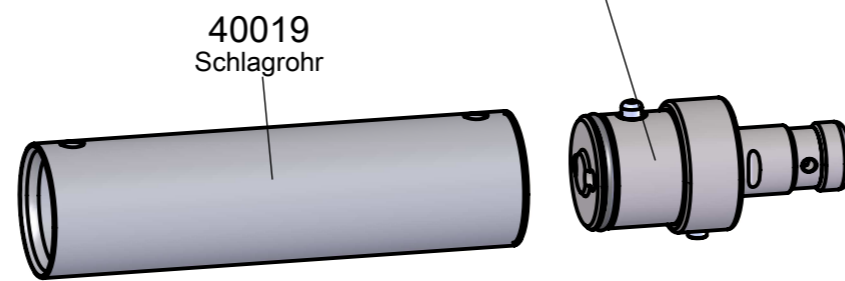
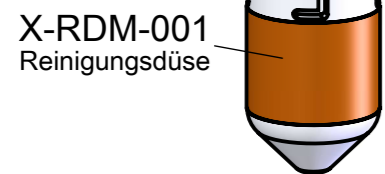
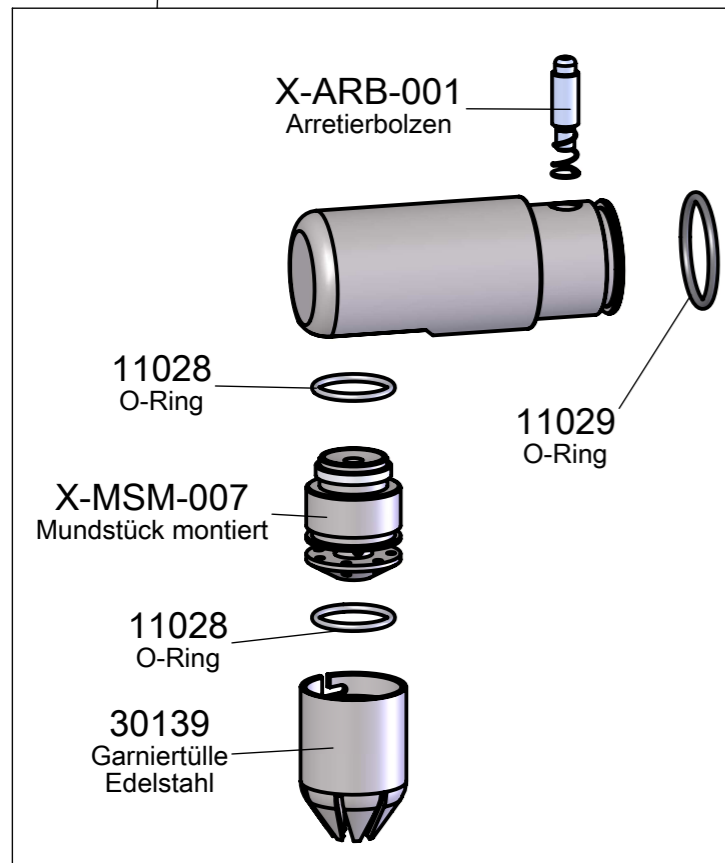


X-ESM-004  
Eingangsstück montiert

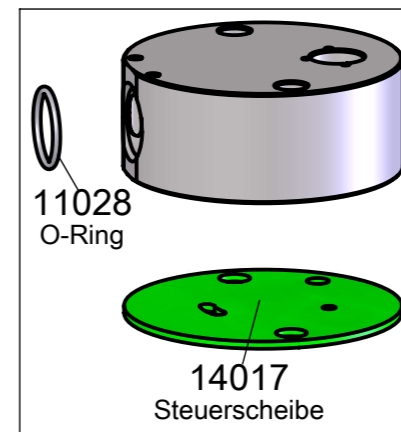


X-LRM-006  
Luftregulierung montiert

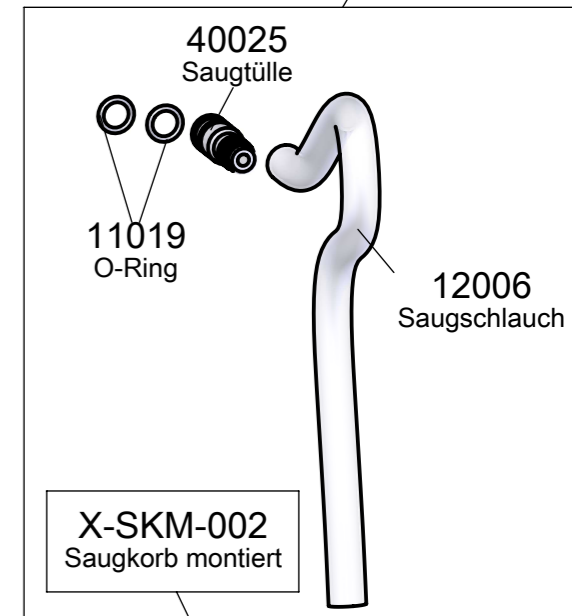
X-ASM-006  
Ausgangsstück montiert



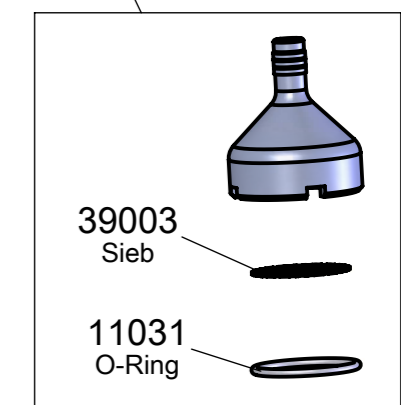
Alternative zu Schlagtellern 35003  
und Zwischenschieben 30001



X-SSM-002  
Saugschlauch montiert



X-SKM-002  
Saugkorb montiert



X-PUM-006  
Industriepumpe

